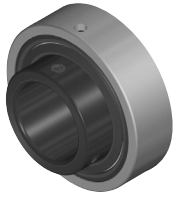


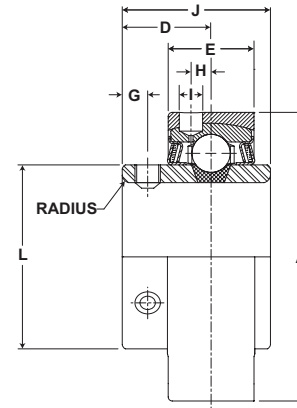
Performance Mounted Ball Bearings



Mtd. Ball Bearings



- Duty:** Standard
- Rolling Elements:** Ball
- Self Alignment:** +/- 2 Degrees
- Lock:** Setscrew
- Seal:** Felt
- Optional Seal:** Contact
- Temperature:** -20° to 220°F



AR Series Standard Duty Expansion Insert - Setscrew Locking

BORE DIAMETER		PART No.	BEARING INSERT No.	BASIC DYNAMIC RATING lb/N	DIMENSIONS inch / mm								MAX RAD. TO CLEAR	SETScrew THREAD	UNIT Wt. lb/kg
inch	mm				A +.000" -.005"	D	E	G	H	I	J	L			
1/2	20	AR-2-08	2-08	2611	2.062	23/32	49/64	3/16	1/8	1/4	1 7/32	1 3/16	.040	1/4-28	.8
9/16		AR-2-09	2-09												
5/8		AR-2-010	2-010												
11/16		AR-2-011	2-011												
3/4		AR-2-012	2-012												
		AR-204	5204	11614	52.375	18.3	19.4	4.8	3.2	6.4	31.0	30.2	1.02		.36
13/16	25	AR-2-013	2-013	2801	2.272	13/16	49/64	7/32	11/64	1/4	1 3/8	1 3/8	.040	1/4-28	1.0
7/8		AR-2-014	2-014												
15/16		AR-2-015	2-015												
		AR-2-1	2-1												
1		AR-205	5205												
				12459	57.709	20.6	19.4	5.6	4.4	6.4	34.9	34.9	1.02		.45
1 1/16	30	AR-2-11	2-11	4381	2.687	7/8	61/64	7/32	7/32	1/4	1 1/2	1 19/32	.040	1/4-28	1.5
1 1/8		AR-2-12	2-12												
1 3/16		AR-2-13	2-13												
		AR-1-14	1-14												
1 1/4		AR-206	5206												
				19487	68.250	22.2	24.2	5.6	5.6	6.4	38.1	40.5	1.02		.68
1 1/4	35	AR-2-14	2-14	5782	3.140	1	1 1/64	1/4	1/4	1/4	1 11/16	1 55/64	.040	5/16-24	2.1
1 5/16		AR-2-15	2-15												
1 3/8		AR-2-16	2-16												
		AR-2-17	2-17												
1 7/16		AR-207	5207												
				25718	79.756	25.4	25.8	6.4	6.4	6.4	42.9	47.2	1.02		.95
1 1/2	40	AR-2-18	2-18	7340	3.375	1 3/16	1 11/64	5/16	19/64	1/4	1 15/16	2 1/16	.062	5/16-24	2.8
1 9/16		AR-2-19	2-19												
		AR-208	5208												
				32648	85.725	30.2	29.8	7.9	7.5	6.4	49.2	52.4	1.57		1.27
1 5/8	45	AR-2-110	2-110	7901	3.562	1 3/16	1 11/64	5/16	19/64	1/4	1 15/16	2 19/64	.062	5/16-24	3
1 11/16		AR-2-111	2-111												
		AR-2-112	2-112												
1 3/4		AR-209	5209												
				35144	90.475	30.2	29.8	7.9	7.5	6.4	49.2	58.3	1.57		1.36
1 13/16	50	AR-2-113	2-113	7889	3.875	1 9/32	1 13/64	3/8	17/64	11/32	2 1/32	2 15/32	.062	3/8-24	3.5
1 7/8		AR-2-114	2-114												
1 15/16		AR-2-115	2-115												
		AR-1-2	1-2												
2		AR-210	5210												
				35090	98.425	32.5	30.6	9.5	6.7	8.7	51.6	62.7	1.57		1.59
2	55	AR-2-2	2-2	9752	4.250	1 5/16	1 17/64	3/8	19/64	11/32	2 3/16	2 23/32	.080	3/8-24	4.4
2 1/8		AR-2-22	2-22												
		AR-2-23	2-23												
2 3/16		AR-211	5211												
				43377	107.950	33.3	32.1	9.5	7.5	8.7	55.6	69.1	2.03		2.00
2 1/4	60	AR-2-24	2-24	11789	4.718	1 9/16	1 21/64	7/16	21/64	11/32	2 9/16	2 63/64	.080	3/8-24	5.8
2 3/8		AR-2-26	2-26												
		AR-2-27	2-27												
2 7/16		AR-212	5212												
				52437	119.837	39.7	33.7	11.1	8.3	8.7	65.1	75.8	2.03		2.63
2 11/16	70	AR-2-211	2-211	13971	5.170	1 11/16	1 29/64	7/16	3/8	11/32	2 3/4	3 7/16	.080	7/16-20	9.3
		AR-214	5214												
				62143	131.318	42.9	36.9	11.1	9.5	8.7	69.9	87.3	2.03		4.22
2 7/8	75	AR-2-214	2-214	14839	5.375	1 3/4	1 37/64	7/16	3/8	11/32	3 1/16	3 41/64	.080	7/16-20	9.6
		AR-2-215	2-215												
2 15/16		AR-215	5215												
				66004	136.525	44.5	40.1	11.1	9.5	8.7	77.8	92.5	2.03		4.35
3 3/16	80	AR-2-33	2-33	17412	5.875	1 15/16	1 53/64	17/32	13/32	15/32	3 1/4	3 59/64	.120	7/16-20	12.2
3.150		AR-216	5216												
				77449	149.225	49.2	46.4	13.5	10.3	11.9	82.6	99.6	3.0		5.53
3 1/4	90	AR-2-34	2-34	18681	6.280	2 1/32	2 5/64	15/32	17/32	15/32	3 3/8	4 5/32	.120	7/16-20	15.2
3 3/8		AR-2-36	2-36												
3 7/16		AR-2-37	2-37												
				83093	159.512	51.6	52.8	11.9	13.5	11.9	85.7	105.6	3.05		6.89
3 1/2		AR-2-38	2-38	21566	6.750	2 7/32	2 9/64	5/8	15/32	15/32	3 25/32	4 25/64	.120	1/2-20	18.5
		AR-218	5218												
				95926	171.450	56.4	54.4	15.9	11.9	11.9	96.0	111.5	3.05		8.39

For Standard Duty Bearing Inserts - Single Lock see page G-92.